

Bridge of light

Pink

LS.: Franz Gratzner



1. When you think hope is lost and giv - ing up is all you got.
2. On your feet, I made a storm you're con - vinced that you're all a - lone.



Blue turns black, your con - fi - dence is cracked, there seems no turn - ing back from here.
Look at the stars, it's straight up the dark, you'll find your heart shines like the sun.



Some - times there is - n't an ob - vi - ous ex - pla - na - tion while the ho - li - est stars can feel the strong - est pal - pi - ta - tions.
Let's not let their an - ger get us lost and the need to be right cause us way too high costs.

Refrain



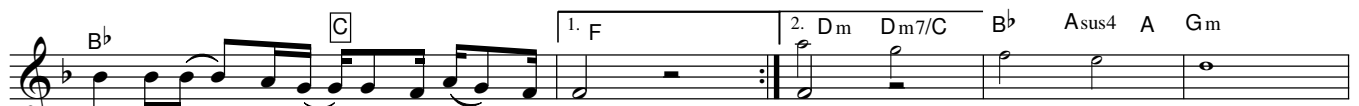
That's when you can build a bridge of light, that's what turns the wrong so right,



that's when you can't give up the fight. That's when love turns night - time in - to day,



that's when lone - li - ness goes a - way, that's when you got - ta be strong to - night,



on - ly love can build us a bridge of light. light.



Deep breath, take it on the chin but don't for - get to let the love back in



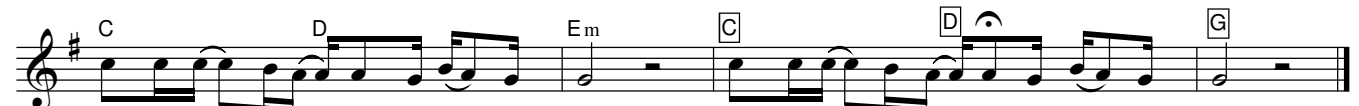
That's when you can build a bridge of light, that's what turns the wrong so right,



that's when you can't give up the fight. and that's when love turns night - time in - to day,



that's when lone - li - ness goes a - way, that's when you got - ta be strong to - night, cause



on - ly love can build us a bridge of light. on - ly love can build us a bridge of light.